

CERTIFIED LAND CORNER RECORDATION

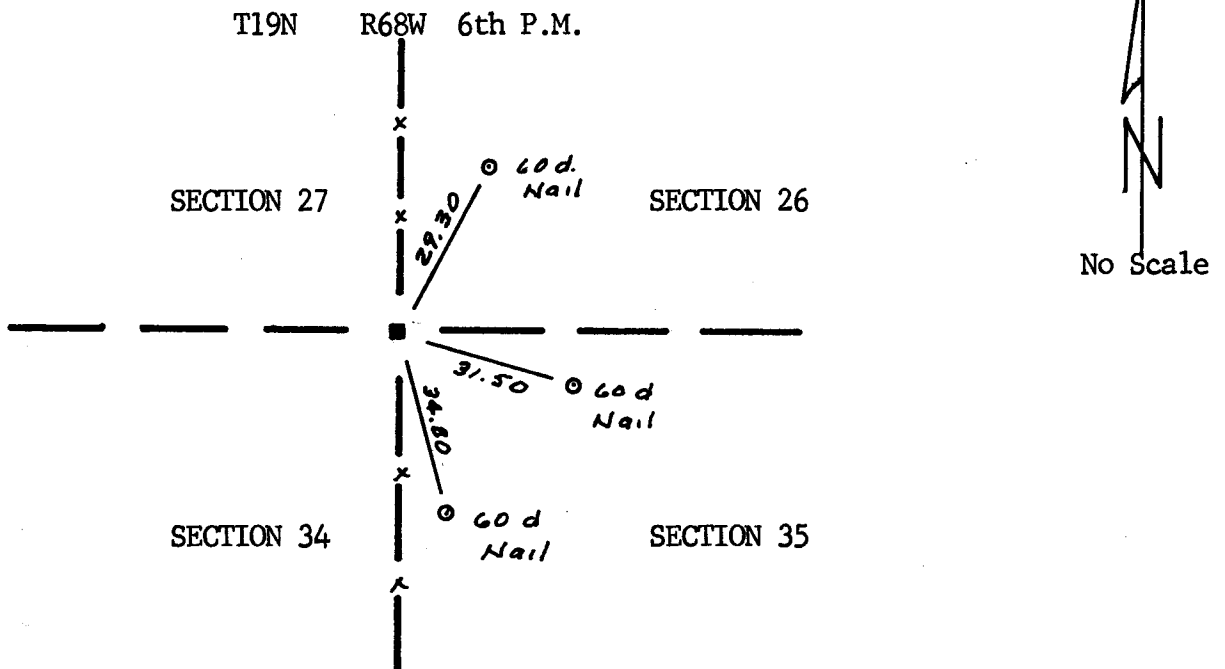
DESCRIPTION OF CORNER EVIDENCE FOUND, AND ORIGINAL RECORD (if known)

Found 15"X10" X6" Red stone in N/S fence line with 1/2" rebar at south face.

DESCRIPTION OF MONUMENT AND ACCESSORIES ESTABLISHED TO PERPETUATE THE ORIGINAL LOCATION OF THIS CORNER:

See sketch below.

SKETCH, WITH COURSE AND DISTANCE TO ADJACENT CORNER IF DETERMINED IN THIS SURVEY.
(May Sketch or Paste Reproduction on Reverse Side.)



I, Albert L. Scott certify that I have carefully performed or reviewed the work done on the diagrammed corner as reported on this recordation form and approve the same.

Albert L. Scott
Signature of Surveyor

L.S. 2573
Registration No.

STATE OF WYOMING,
Office of Clerk and Recorder,
County of _____

567570

This "corner record" was filed for record on the _____ day of _____ **FEB 12 1980**, 19____, was noted on the cross-index plat and is assigned page No. _____, in book No. _____.

James C. Whitehead
County Official

Cross Index No.	<u>V17</u>	T.	<u>19N</u>	R.	<u>68W</u>	Mer.
		T.		R.		Mer.
		T.		R.		Mer.
		T.		R.		Mer.
		T.		R.		Mer.
		T.		R.		Mer.
		T.		R.		Mer.